

# Village of McLean

## Resolution #

13-01-07R

A Resolution for Public Hearing Relating to the  
Adoption of a Tax Increment Financing  
Redevelopment Plan for the Village of McLean  
Redevelopment Project Area

Adopted by the Village Board  
of the  
Village of McLean

Published in pamphlet form by authority of the Village of McLean, McLean

County, Illinois this 10<sup>th</sup> day of Jan, 20 13.

RESOLUTION NO. 13-01-07 R

**VILLAGE OF MCLEAN, ILLINOIS**

**RESOLUTION FOR PUBLIC HEARING  
RELATING TO THE ADOPTION OF A TAX INCREMENT  
FINANCING REDEVELOPMENT PLAN FOR THE  
VILLAGE OF MCLEAN  
REDEVELOPMENT PROJECT AREA**

WHEREAS, the Village of McLean, Illinois (the "Village") desires to redevelop an area within the central area of the Village legally described on Exhibit A attached hereto and made a part hereof (the "Redevelopment Project Area"), which is also described in the Village of McLean Redevelopment Plan (the "Redevelopment Plan"); and

WHEREAS, it appears that the Redevelopment Project Area cannot be redeveloped without the adoption of a tax increment financing plan pursuant to the Tax Increment Allocation Redevelopment Act (65 ILCS 5/11-74.4-1 et seq., the "TIF Act"); and


WHEREAS, the boundaries of the Redevelopment Project Area are set forth in the Redevelopment Plan; and

WHEREAS, pursuant to the TIF Act, a public hearing must be held prior to the adoption of any redevelopment plan or redevelopment project area and notice of the hearing must be given to certain taxing districts and the State of Illinois Department of Commerce and Economic Opportunity.

NOW, THEREFORE, BE IT RESOLVED by the Village Board of the Village of McLean that a public hearing on the Redevelopment Plan shall be held at 6:30 p.m. on March 11, 2013, at the library room at the Mt. Hope-Funks Grove Park District Building located at 107 S. West St., McLean, Illinois 61754. Further, the Village Engineer, Shive-Hattery and McGrath Law Office, P.C., 113 S. Main St., Mackinaw, Illinois 61755 are directed to see to the publication and mailing of the appropriate notices pursuant to the TIF Act, including notices to the affected taxing districts and the State of Illinois Department of Commerce and Economic Opportunity.

PASSED in due form on a roll call vote by the Board of Trustees of the Village of McLean at a duly held meeting on the 7<sup>th</sup> day of January, 2013.

APPROVED:

  
Jim Adams, President of the Board of  
Trustees of the Village of McLean

ATTEST:

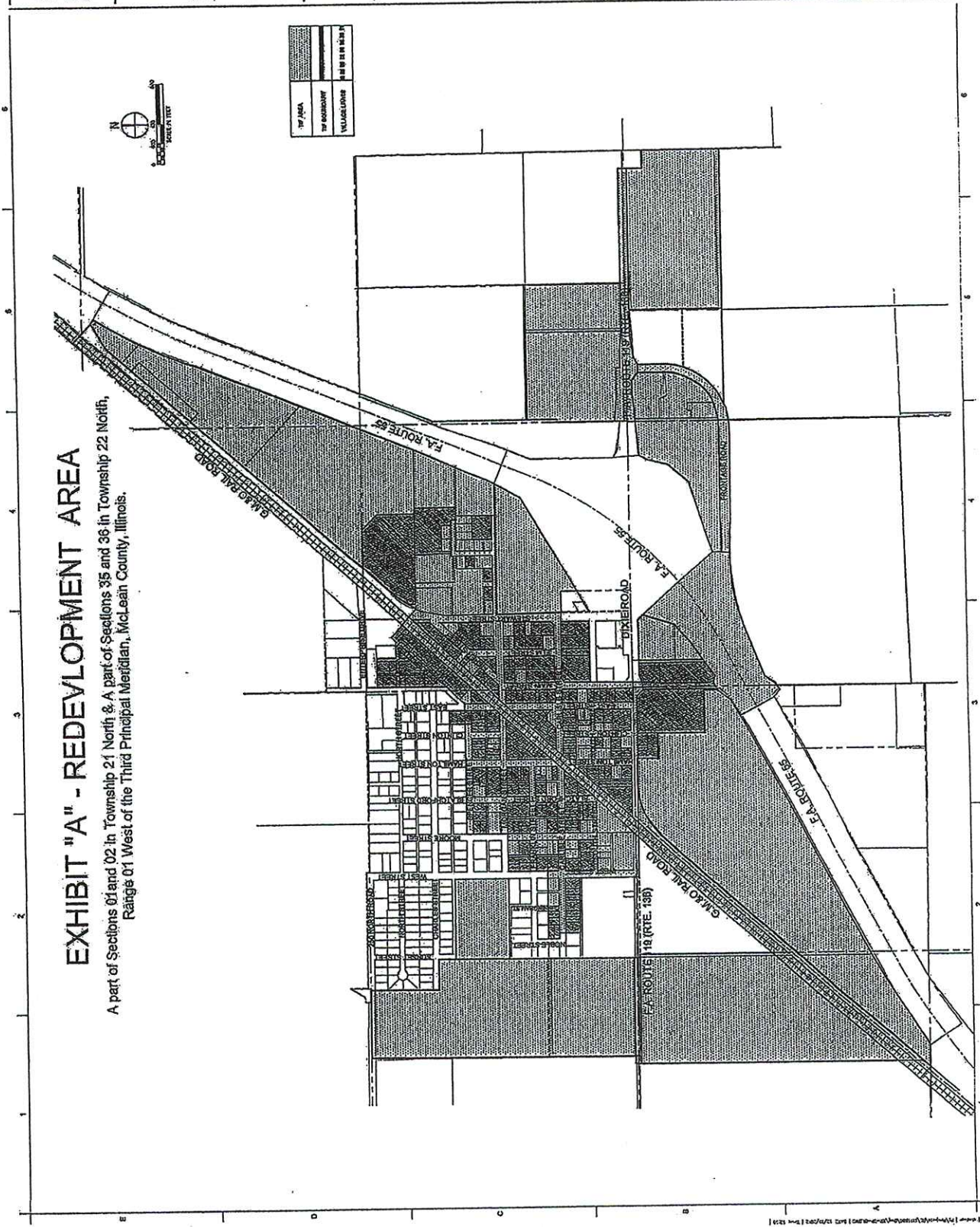
  
Sharon Leipold, Village Clerk

AYES:	<u>5</u>
NAYS:	<u>0</u>
ABSENT:	<u>1</u>



# EXHIBIT "A" - REDEVELOPMENT AREA

A part of Sections 01 and 02 in Township 21 North & A part of Sections 35 and 36 in Township 22 North,  
Range 01 West of the Third Principal Meridian, McLean County, Illinois.



**SHIVE-HATTERY**  
A C C O U N T A N T S & E N G I N E E R S  
501 E. Main Street, Suite 100  
McLean, Illinois 61754  
Phone: (815) 298-1111  
Fax: (815) 298-1112  
E-mail: shive-hattery@shive-hattery.com

Village of McLean  
TIF MAP

Village of McLean  
McLean, Illinois

KEY PLAN

DATE: 10/23/2012  
BY: JSH  
PROJECT: 10/23/2012  
SHEET: 10/23/2012  
TIF PLAT

B1.1

## MCLEAN TIF DESCRIPTION

BEGINNING AT THE SOUTHEAST CORNER OF THE SOUTHWEST QUARTER OF SECTION 35;

THENCE SOUTH 89 DEGREES 14 MINUTES 59 SECONDS WEST A DISTANCE OF 30.00 FEET TO A POINT ON THE SOUTHERLY RIGHT-OF-WAY LINE OF US ROUTE 136;

THENCE SOUTH 89 DEGREES 58 MINUTES 58 SECONDS EAST ALONG THE SAID SOUTHERLY RIGHT-OF-WAY LINE A DISTANCE OF 36.50 FEET TO A POINT;

THENCE SOUTH 00 DEGREES 05 MINUTES 16 SECONDS EAST A DISTANCE OF 1275.65 FEET TO A POINT ON THE NORTHERLY RIGHT-OF-WAY LINE OF G.M. & O RAILROAD;

THENCE NORTH ALONG THE SAID NORTHERLY RIGHT-OF-WAY LINE OF G.M. & O RAILROAD TO THE INTERSECTION OF THAT LINE WITH THE SOUTHERLY RIGHT-OF-WAY LINE OF U.S. ROUTE 136;

THENCE WEST ALONG THE SAID SOUTHERLY RIGHT-OF-WAY LINE OF U.S. ROUTE 136 TO THE INTERSECTION OF THAT LINE WITH THE SOUTHERLY EXTENTION OF THE WEST RIGHT-OF-WAY LINE OF WEST STREET;

THENCE NORTH ALONG THE SAID WESTERLY RIGHT-OF-WAY LINE OF WEST STREET TO THE SOUTHEAST CORNER OF LOT 1 IN BLOCK 6 IN ALDRICH'S FIRST ADDITION TO THE VILLAGE OF MCLEAN;

THENCE WEST ALONG THE SOUTHERLY LINES OF LOTS 1, 2, 3, 4, 5, 6, 7, 8, 9 AND 10 IN SAID BLOCK 6 IN ALDRICH'S FIRST ADDITION TO THE SOUTHWEST CORNER OF SAID LOT 10;

THENCE NORTH ALONG THE EXTENTION OF THE WEST LINE OF SAID LOT 10 TO THE INTERSECTION OF THAT LINE AND THE NORTH RIGHT-OF-WAY LINE OF CARLISLE STREET;

THENCE WEST ALONG THE NORTH RIGHT-OF-WAY LINE OF CARLISLE STREET TO THE INTERSECTION OF THAT LINE WITH THE EAST RIGHT-OF-WAY LINE OF NOBLE STREET;

THENCE NORTH ALONG THE EAST RIGHT-OF-WAY LINE OF NOBLE STREET TO THE NORTHWEST CORNER OF LOT 6 IN BLOCK 4 IN ALDRICH'S FIRST ADDITION TO THE VILLAGE OF MCLEAN;

THENCE EAST ALONG THE NORTH LINES OF LOTS 6 AND 5 IN BLOCK 4 IN ALDRICH'S FIRST ADDITION TO THE INTERSECTION OF THAT LINE WITH THE EAST RIGHT-OF-WAY LINE OF WEST STREET;

THENCE NORTH ALONG THE EAST RIGHT-OF-WAY LINE OF WEST STREET TO THE INTERSECTION OF THAT LINE AND THE SOUTHERLY RIGHT-OF-WAY LINE OF MORGAN STREET;

THENCE EAST ALONG THE SOUTH RIGHT-OF-WAY LINE OF MORGAN STREET TO THE INTERSECTION OF THAT LINE AND THE EAST RIGHT-OF-WAY LINE OF MOORE STREET;



THENCE NORTH ALONG THE EAST RIGHT-OF-WAY LINE OF MOORE STREET TO THE INTERSECTION OF THAT LINE AND THE NORTH RIGHT-OF-WAY LINE OF SPENCER STREET;

THENCE EAST ALONG THE NORTH RIGHT-OF-WAY LINE OF SPENCER STREET TO THE INTERSECTION OF THAT LINE WITH THE WEST LINE OF THE EAST HALF OF LOT 6 IN BLOCK 11 IN THE VILLAGE OF MCLEAN;

THENCE NORTH ALONG THE EXTENSION OF THE SAID WEST LINE OF THE EAST HALF OF LOT 6 IN BLOCK 11 TO THE INTERSECTION OF THAT LINE WITH THE NORTH RIGHT-OF-WAY LINE OF A 20 FOOT ALLEY IN BLOCK 11 IN THE VILLAGE OF MCLEAN;

THENCE EAST ALONG THE SAID NORTH RIGHT-OF-WAY LINE OF A 20 FOOT ALLEY IN BLOCK 11 TO THE INTERSECTION OF THAT LINE WITH THE WEST RIGHT-OF-WAY LINE OF EAST STREET;

THENCE SOUTH ALONG THE WEST RIGHT-OF-WAY LINE OF EAST STREET TO THE INTERSECTION OF THAT LINE WITH THE NORTH LINE OF SPENCER STREET;

THENCE EAST ALONG THE EASTERLY EXTENSION OF SPENCER STREET TO THE INTERSECTION OF THAT LINE AND THE EAST RIGHT-OF-WAY LINE OF EAST STREET;

THENCE NORTHEASTERLY ALONG THE SOUTHERLY RIGHT-OF-WAY LINE OF MERRIAM STREET TO THE INTERSECTION OF THAT LINE WITH THE EAST RIGHT-OF-WAY LINE OF MAIN STREET;

THENCE NORTH ALONG THE EAST RIGHT-OF-WAY LINE OF MAIN STREET TO THE NORTHWEST CORNER OF LOT 2 IN BLOCK 2 OF S.I. LEACHES FIRST ADDITION TO THE VILLAGE OF MCLEAN;

THENCE EAST ALONG THE EXTENSION OF THE NORTH LINE OF SAID LOT 2 TO THE INTERSECTION OF THAT LINE WITH THE EAST RIGHT-OF-WAY LINE OF PRAIRIE STREET;

THENCE SOUTH ALONG THE EAST RIGHT-OF-WAY LINE OF PRAIRIE STREET TO THE INTERSECTION OF THAT LINE WITH THE NORTH RIGHT-OF-WAY LINE OF NORTH STREET;

THENCE EAST ALONG THE NORTH RIGHT-OF-WAY LINE OF NORTH STREET TO THE INTERSECTION OF THAT LINE WITH THE SOUTHERLY RIGHT-OF-WAY LINE OF MERRIAM STREET;

THENCE NORTHEASTERLY ALONG THE EXTENSION OF THE SOUTHERLY RIGHT-OF-WAY LINE OF MERRIAM STREET TO THE NORTHWEST CORNER OF LOT 10 IN BLOCK 5 IN S.I. LEACHES FIRST ADDITION TO THE VILLAGE OF MCLEAN;

THENCE SOUTH 47 DEGREES 39 MINUTES 53 SECONDS EAST A DISTANCE OF 375.96 FEET TO A POINT ON THE EASTERLY RIGHT-OF-WAY LINE OF OLD ROUTE 66;

THENCE NORTH 30 DEGREES 27 MINUTES 26 SECONDS EAST ALONG THE SAID EASTERLY RIGHT-OF-WAY OF OLD ROUTE 66 A DISTANCE OF 232.24 FEET TO A POINT;

THENCE NORTH 42 DEGREES 20 MINUTES 07 SECONDS EAST ALONG THE SAID EASTERLY RIGHT-OF-WAY OF OLD ROUTE 66 A DISTANCE OF 3568.60 FEET TO A POINT;

THENCE NORTH 60 DEGREES 10 MINUTES 50 MINUTES EAST ALONG THE SAID EASTERLY RIGHT-OF-WAY OF OLD ROUTE 66 A DISTANCE OF 286.43 FEET TO A POINT;

THENCE SOUTH 60 DEGREES 08 MINUTES 01 SECONDS EAST A DISTANCE OF 50.00 FEET TO A POINT ON THE WESTERLY RIGHT-OF-WAY LINE OF INTERSTATE ROUTE 55;

THENCE ALONG SAID WESTERLY RIGHT-OF-WAY LINE ALONG A CURVE TO THE SOUTHWEST HAVING A RADIUS OF 4607.03 FEET A CHORD BEARING OF SOUTH 25 DEGREES 56 MINUTES 53 SECONDS WEST, A CHORD LENGTH OF 1,132.79 FEET AND AN ARC LENGTH OF 1,135.66 FEET TO A POINT;

THENCE SOUTH 22 DEGREES 04 MINUTES 29 SECONDS WEST ALONG SAID WESTERLY RIGHT-OF-WAY OF INTERSTATE ROUTE 55 A DISTANCE OF 1549.89 FEET TO A POINT;

THENCE SOUTH 22 DEGREES 02 MINUTES 14 SECONDS WEST ALONG SAID WESTERLY RIGHT-OF-WAY OF INTERSTATE ROUTE 55 A DISTANCE OF 674.38 FEET TO A POINT;

THENCE SOUTH 28 DEGREES 28 MINUTES 15 SECONDS WEST ALONG SAID WESTERLY RIGHT-OF-WAY OF INTERSTATE ROUTE 55 A DISTANCE OF 872.43 FEET TO A POINT;

THENCE SOUTH 28 DEGREES 56 MINUTES 23 SECONDS WEST ALONG SAID WESTERLY RIGHT-OF-WAY OF INTERSTATE ROUTE 55 A DISTANCE OF 289.85 FEET TO A POINT;

THENCE SOUTH 59 DEGREES 50 MINUTES 26 SECONDS WEST ALONG SAID WESTERLY RIGHT-OF-WAY OF INTERSTATE ROUTE 55 A DISTANCE OF 1103.55 FEET TO A POINT;

THENCE NORTH 00 DEGREES 53 MINUTES 10 SECONDS WEST A DISTANCE OF 163.19 FEET TO A POINT;

THENCE SOUTH 89 DEGREES 08 MINUTES 11 SECONDS WEST A DISTANCE OF 205.56 FEET TO A POINT ON THE EAST RIGHT-OF-WAY LINE OF STEWART STREET;

THENCE NORTH 84 DEGREES 32 MINUTES 18 SECONDS WEST A DISTANCE OF 86.29 FEET TO A POINT ON THE WEST RIGHT-OF-WAY LINE OF STEWART STREET;

THENCE SOUTH ALONG THE SAID WEST RIGHT-OF-WAY LINE OF STEWART STREET TO THE INTERSECTION OF THAT LINE WITH THE NORTH RIGHT-OF-WAY LINE OF SOUTH STREET;

THENCE WEST ALONG THE SAID NORTH RIGHT-OF-WAY LINE OF SOUTH STREET TO THE INTERSECTION OF THAT LINE WITH THE EAST RIGHT-OF-WAY LINE OF MAIN STREET;

THENCE SOUTH ALONG THE SAID EAST RIGHT-OF-WAY LINE MAIN STREET TO THE INTERSECTION OF THAT LINE WITH THE SOUTH RIGHT-OF-WAY LINE OF ROUTE 136;

THENCE NORTH 71 DEGREES 39 MINUTES 04 MINUTES EAST ALONG THE SAID SOUTH RIGHT-OF-WAY LINE OF ROUTE 136 A DISTANCE OF 76.16 FEET TO A POINT;

THENCE SOUTH 89 DEGREES 36 MINUTES 47 MINUTES EAST ALONG THE SAID SOUTH RIGHT-OF-WAY LINE OF ROUTE 136 A DISTANCE OF 146.55 FEET TO A POINT;



THENCE NORTH 89 DEGREES 47 MINUTES 40 SECONDS EAST ALONG THE SAID SOUTH RIGHT-OF-WAY LINE OF ROUTE 136 A DISTANCE OF 385.97 FEET TO A POINT;

THENCE SOUTH 41 DEGREES 57 MINUTES 52 SECONDS EAST A DISTANCE OF 934.02 FEET TO A POINT ON THE EASTERLY RIGHT-OF-WAY LINE OF INTERSTATE ROUTE 55;

THENCE NORTH 72 DEGREES 31 MINUTES 21 SECONDS EAST ALONG THE SAID EASTERLY RIGHT-OF-WAY LINE OF INTERSTATE ROUTE 55 A DISTANCE OF 742.43 FEET TO A POINT;

THENCE NORTH 42 DEGREES 21 MINUTES 50 SECONDS EAST ALONG THE SAID EASTERLY RIGHT-OF-WAY LINE OF INTERSTATE ROUTE 55 A DISTANCE OF 264.99 FEET TO A POINT;

THENCE NORTH 14 DEGREES 51 MINUTES 55 SECONDS EAST ALONG THE SAID EASTERLY RIGHT-OF-WAY LINE OF INTERSTATE ROUTE 55 A DISTANCE OF 219.98 FEET TO A POINT;

THENCE NORTH 30 DEGREES 29 MINUTES 58 SECONDS EAST ALONG THE SAID EASTERLY RIGHT-OF-WAY LINE OF INTERSTATE ROUTE 55 A DISTANCE OF 84.24 FEET TO A POINT ON THE SOUTHERLY RIGHT-OF-WAY LINE OF ROUTE 136;

THENCE NORTH 84 DEGREES 51 MINUTES 52 SECONDS EAST ALONG THE SAID SOUTHERLY RIGHT-OF-WAY LINE OF ROUTE 136 A DISTANCE OF 336.10 FEET TO A POINT;

THENCE NORTH 00 DEGREES 20 MINUTES 03 SECONDS WEST A DISTANCE OF 76.66 FEET TO A POINT;

THENCE NORTH 89 DEGREES 19 MINUTES 01 SECONDS EAST A DISTANCE OF 6.29 FEET TO A POINT;

THENCE NORTH 00 DEGREES 14 MINUTES 11 SECONDS WEST A DISTANCE OF 699.71 FEET TO A POINT;

THENCE NORTH 89 DEGREES 45 MINUTES 49 SECONDS EAST A DISTANCE OF 27.31 FEET TO A POINT;

THENCE NORTH 00 DEGREES 14 MINUTES 11 SECONDS WEST A DISTANCE OF 300.23 FEET TO A POINT ON THE NORTH LINE OF THE SOUTH 1000 FEET OF THE SOUTHEAST QUARTER OF SECTION 36 TOWNSHIP 22 NORTH RANGE 1 WEST OF THE THIRD PRINCIPAL MERIDIAN;

THENCE NORTH 89 DEGREES 47 MINUTES 12 SECONDS EAST ALONG THE SAID NORTH LINE OF THE SOUTH 1000 FEET A DISTANCE OF 1321.32 FEET TO A POINT;

THENCE SOUTH 00 DEGREES 17 MINUTES 51 SECONDS EAST A DISTANCE OF 956.56 FEET TO A POINT ON THE NORTH LINE OF ROUTE 136;

THENCE NORTH 89 DEGREES 42 MINUTES 24 SECONDS EAST ALONG THE SAID NORTH RIGHT-OF-WAY LINE OF ROUTE 136 A DISTANCE OF 1132.12 FEET TO A POINT;

THENCE SOUTH 00 DEGREES 06 MINUTES 16 SECONDS EAST A DISTANCE OF 233.64 FEET TO A POINT;



THENCE SOUTH 89 DEGREES 27 MINUTES 40 SECONDS EAST A DISTANCE OF 177.42 FEET TO A POINT ON THE EAST LINE OF THE NORTHEAST QUARTER OF SECTION 1 TOWNSHIP 21 NORTH RANGE 1 WEST OF THE THIRD PRINCIPAL MERIDIAN;

THENCE SOUTH 00 DEGREES 24 MINUTES 26 SECONDS EAST ALONG THE SAID EAST LINE OF THE NORTHEAST QUARTER OF SECTION 1 A DISTANCE OF 753.47 FEET TO A POINT;

THENCE SOUTH 89 DEGREES 51 MINUTES 25 SECONDS WEST A DISTANCE OF 1572.83 TO A POINT;

THENCE NORTH 00 DEGREES 09 MINUTES 41 SECONDS WEST A DISTANCE OF 903.14 FEET TO A POINT ON THE SOUTHERLY RIGHT-OF-WAY LINE OF ROUTE 136;

THENCE SOUTH 89 DEGREES 31 MINUTES 24 SECONDS WEST ALONG SAID SOUTHERLY RIGHT-OF-WAY LINE OF ROUTE 136 A DISTANCE OF 230.86 FEET TO A POINT;

THENCE SOUTH 82 DEGREES 14 MINUTES 54 SECONDS WEST ALONG SAID SOUTHERLY RIGHT-OF-WAY LINE OF ROUTE 136 A DISTANCE OF 236.63 FEET TO A POINT;

THENCE SOUTH 61 DEGREES 27 MINUTES 03 SECONDS WEST ALONG SAID SOUTHERLY RIGHT-OF-WAY LINE OF ROUTE 136 A DISTANCE OF 85.01 FEET TO A POINT ON THE EASTERLY RIGHT-OF-WAY LINE OF EAST FRONTAGE ROAD;

THENCE SOUTH 00 DEGREES 28 MINUTES 36 SECONDS EAST ALONG SAID EASTERLY RIGHT-OF-WAY LINE OF EAST FRONTAGE ROAD A DISTANCE OF 248.41 FEET TO A POINT;

THENCE SOUTHWESTERLY ALONG A CURVE CONCAVE TO THE NORTHWEST HAVING A RADIUS OF 612.96 FEET, AN ARC LENGTH OF 676.31 FEET AND A CHORD BEARING SOUTH 31 DEGREES 07 MINUTES 56 SECONDS WEST A DISTANCE OF 642.53 FEET TO A POINT;

THENCE SOUTH 62 DEGREES 44 MINUTES 28 SECONDS WEST ALONG SAID EASTERLY RIGHT-OF-WAY LINE OF EAST FRONTAGE ROAD A DISTANCE OF 71.25 FEET TO A POINT;

THENCE SOUTH 62 DEGREES 58 MINUTES 28 SECONDS WEST ALONG THE SAID SOUTHERLY RIGHT-OF-WAY LINE OF THE EAST FRONTAGE ROAD A DISTANCE OF 39.99 FEET TO A POINT;

THENCE SOUTHWESTERLY ALONG A CURVE CONCAVE TO THE NORTHWEST HAVING A RADIUS OF 622.96 FEET AN ARC LENGTH OF 123.45 FEET AND A CHORD BEARING SOUTH 78 DEGREES 42 MINUTES 39 SECONDS WEST A DISTANCE OF 123.25 FEET TO A POINT;

THENCE SOUTH 00 DEGREES 20 MINUTES 03 SECONDS EAST A DISTANCE OF 1639.04 FEET TO A POINT;

THENCE SOUTH 88 DEGREES 17 MINUTES 07 SECONDS WEST A DISTANCE OF 2654.74 FEET TO A POINT;

THENCE NORTH 00 DEGREES 08 MINUTES 51 SECONDS WEST A DISTANCE OF 1294.79 FEET TO A POINT ON THE SOUTHERLY RIGHT-OF-WAY LINE OF INTERSTATE ROUTE 55;

THENCE SOUTH 59 DEGREES 45 MINUTES 57 SECONDS WEST ALONG SAID SOUTHERLY RIGHT-OF-WAY LINE OF INTERSTATE ROUTE 55 A DISTANCE OF 45.40 FEET TO A POINT;

THENCE NORTH 53 DEGREES 05 MINUTES 37 SECONDS WEST ALONG THE SAID SOUTHERLY RIGHT-OF-WAY LINE OF INTERSTATE ROUTE 55 A DISTANCE OF 83.24 FEET TO A POINT;

THENCE NORTH 28 DEGREES 58 MINUTES 08 SECONDS WEST A DISTANCE OF 381.55 FEET TO A POINT ON THE NORTHERLY RIGHT-OF-WAY LINE OF INTERSTATE ROUTE 55;

THENCE SOUTH 61 DEGREES 01 MINUTES 52 SECONDS WEST ALONG THE SAID NORTHERLY RIGHT-OF-WAY LINE OF INTERSTATE ROUTE 55 A DISTANCE OF 124.28 FEET TO A POINT;

THENCE SOUTH 62 DEGREES 36 MINUTES 12 SECONDS WEST ALONG THE SAID NORTHERLY RIGHT-OF-WAY LINE OF INTERSTATE ROUTE 55 A DISTANCE OF 1420.84 FEET TO A POINT;

THENCE SOUTH 62 DEGREES 50 MINUTES 36 SECONDS WEST ALONG THE SAID NORTHERLY RIGHT-OF-WAY LINE OF INTERSTATE ROUTE 55 A DISTANCE OF 1193.55 FEET TO A POINT;

THENCE SOUTH 58 DEGREES 46 MINUTES 18 SECONDS WEST ALONG THE SAID NORTHERLY RIGHT-OF-WAY LINE OF INTERSTATE ROUTE 55 A DISTANCE OF 1010.36 FEET TO A POINT;

THENCE SOUTH 89 DEGREES 56 MINUTES 52 SECONDS WEST A DISTANCE OF 219.58 FEET TO A POINT ON THE SOUTHERLY RIGHT-OF-WAY LINE OF OLD ROUTE 66;

THENCE NORTH 42 DEGREES 20 MINUTES 07 SECONDS EAST ALONG THE SAID SOUTHERLY RIGHT-OF-WAY LINE OF OLD ROUTE 66 A DISTANCE OF 98.37 FEET;

THENCE NORTH 00 DEGREES 01 MINUTES 04 SECONDS EAST A DISTANCE OF 2777.15 FEET TO A POINT ON THE NORTH RIGHT-OF-WAY LINE OF ROUTE 136;

THENCE SOUTH 89 DEGREES 58 MINUTES 58 SECONDS EAST ALONG THE SAID NORTH RIGHT-OF-WAY LINE OF ROUTE 136 A DISTANCE OF 72.88 FEET TO A POINT;

THENCE NORTH 00 DEGREES 14 MINUTES 59 SECONDS EAST A DISTANCE OF 2624.89 FEET TO A POINT;

THENCE SOUTH 89 DEGREES 58 MINUTES 39 SECONDS EAST A DISTANCE OF 684.44 FEET TO A POINT;

THENCE SOUTH 00 DEGREES 14 MINUTES 59 SECONDS WEST ALONG THE WEST LINE OF LANE SUBDIVISION AS RECORDED AS DOCUMENT NUMBER 1971-8034 IN THE OFFICE OF RECORDER OF DEEDS MCLEAN COUNTY ILLINOIS A DISTANCE OF 677.57 FEET TO THE INTERSECTION OF THAT LINE WITH THE SOUTH RIGHT-OF-WAY LINE OF CHARLES STREET;

THENCE SOUTH 89 DEGREES 50 MINUTES 03 SECONDS EAST ALONG THE SAID SOUTH RIGHT-OF-WAY LINE OF CHARLES STREET A DISTANCE OF 300.02 FEET TO THE INTERSECTION OF THAT LINE WITH THE WEST RIGHT-OF-WAY LINE OF SUNSET STREET;



THENCE SOUTH 00 DEGREES 14 MINUTES 59 SECONDS WEST ALONG THE SAID WEST RIGHT-OF-WAY LINE OF SUNSET STREET TO THE INTERSECTION OF THAT LINE WITH THE SOUTH LINE OF SPAULDINGS SECOND ADDITION TO THE VILLAGE OF MCLEAN;

THENCE EAST ALONG THE SAID SOUTH LINE OF SPAULDINGS SECOND ADDITION TO THE INTERSECTION OF THAT LINE WITH THE WEST RIGHT-OF-WAY LINE OF WEST STREET;

THENCE SOUTH ALONG SAID WEST RIGHT-OF-WAY LINE OF WEST STREET TO THE INTERSECTION OF THAT LINE WITH THE NORTH LINE OF ALDRICH'S FIRST ADDITION TO THE VILLAGE OF MCLEAN;

THENCE WEST ALONG THE SAID NORTH LINE OF ALDRICH'S FIRST ADDITION TO THE INTERSECTION OF THAT LINE WITH THE WEST LINE OF SAID ALDRICH'S FIRST ADDITION;

THENCE SOUTH ALONG SAID WEST LINE OF ALDRICH'S FIRST ADDITION TO THE POINT OF BEGINNING.

STATE OF ILLINOIS )

) SS

COUNTY OF MCLEAN )

**PUBLICATION CERTIFICATE**

I, the undersigned Village Clerk, certify that I am the duly elected and acting Village Clerk of the Village of McLean, McLean County, Illinois.

I further certify that on Jan 7<sup>th</sup>, 2013, the Board of Trustees of such municipality passed and approved

**Resolution No. 13-01-07R**, entitled:

**A Resolution for Public Hearing Relating to the Adoption of a Tax Increment Financing Redevelopment Plan for the Village of McLean Redevelopment Project Area**

Board of Trustees of the Village of McLean previously adopted a Resolution that authorized all Village Ordinances to be published in pamphlet form.

The pamphlet form of **Resolution No. 13-01-07R**, including the Resolution and a cover sheet thereof, was prepared, and a copy of such Resolution was posted in the municipal building, commencing on 13<sup>th</sup> of Jan, 2013 and continuing for a t least ten days thereafter. Copies of such Resolution were also available for public inspection upon request in the office of the Village Clerk.

Dated at McLean, Illinois, this 20<sup>th</sup> day of Jan, 2013

Sharon C. Leopold  
Village Clerk

(SEAL)